

Product information  
Artworks by Toikka,  
deliveries start 23<sup>rd</sup> of August, 2010:  
For prices, contact your local distributor.

Latina I, 1/30  
Latina II, 1/30  
Latina III, 1/30  
Lehto, clear, 1/50  
Liplatus, 1/30  
Loilotus, 1/40  
Lumilinna, clear, 1/50  
Lumilinna, matt clear, 1/50  
Lumilinna, matt white, 1/50  
Luola, big matt blue, 1/50  
Luola, big matt green, 1/50  
Luola, small matt purple, 1/50  
Luola, small matt red, 1/50  
Lähde, matt black, 1/50  
Lähde, matt grey, 1/50  
Lähde, matt white, 1/50

#### Further information:

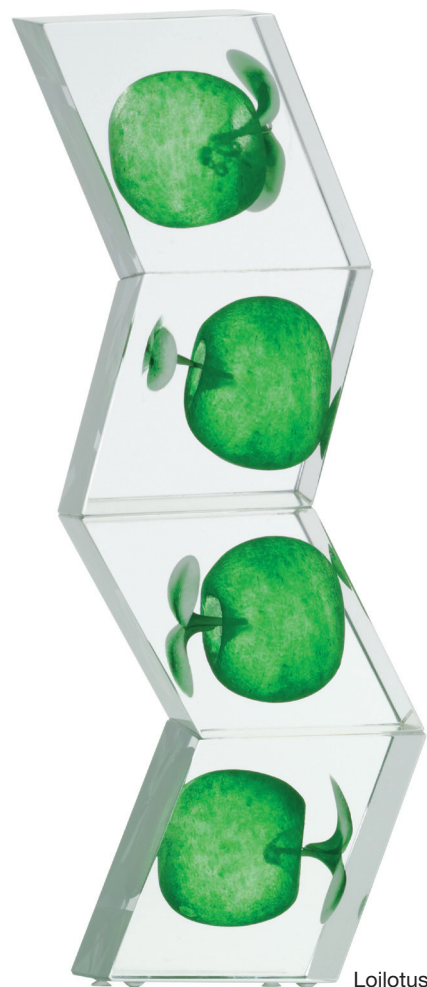
Tuija Aalto-Setälä | Head of PR, Finland HQ  
Tel. +358 204 39 5255 | tuija.aalto-setala@fiskars.com

#### Photo requests:

Kirsi Lauttia, Communicator,  
Tel. +358 204 39 6220 | kirsi.lauttia@fiskars.com

#### Distribution:

www.iittala.com  
see: Stores  
or: Contact => Sales Units



## Art Works by Oiva Toikka - a jubileum collection

This year **Oiva Toikka**, artist and professor, celebrates his fiftieth year as an Iittala designer. During this special year, the new Art Works collection, which Toikka has designed for Iittala, will be unveiled **at Vessel as Part of London Design Festival 2010**. Each of these collections, the first of which was presented last year, is the creative output of an individual designer, specially commissioned by Iittala. Art Works seamlessly merges the artist's vision with the professional skill of the Nuutajärvi factory glassblowers.



The first Art Works collection was created last year by **Harri Koskinen**. Oiva Toikka, master glass artist, is the next natural link in the Art Works chain. Toikka's imaginative use of colours and various glass techniques is particularly well showcased in Iittala's *Birds by Toikka* collection, which has gained huge international recognition. The artist's mischievous demeanour and expressiveness are reflected in the characters of the glass birds as well as in his remarkable stage designs for theatre and opera. The new Art Works collection includes references to Toikka's past creations. Toikka describes his subject matter as "revivalist". His creative work involves developing old techniques to a completely new level. "Renewed inspiration – I wanted to refine the techniques and explore the new opportunities that they offer," explains Toikka.

The 2010 Art Works collection includes works that, through their names, illustrate the importance of a story within the creative process. They are also a manifestation of Toikka's energetic humour. All of the works' Finnish



names begin with the letter 'L': *Liplatus, Loilotus, Lehto, Lumilinna, Lähde, Luola* and *Latina I, II and III*.

"The names of all calves born in the same year begin with the same letter – this is also true of these art glass objects," says Toikka with a laugh.



Lumilinna

Oiva Toikka's creations in glass are unique. The richness of their baroque style and bold colours provide an opulent contrast with the unadorned and streamlined forms favoured by functionalism. The painter **Louise Bourgeois** is among the artists fascinated by Toikka's style. Of all the Art Works pieces, the *Latina* works are perhaps the strongest embodiment of the development and merging of old techniques. The *Latina* works encompass Toikka's *Lollipop* and glass cubes and also his *Bouquet* sculptures. Oiva Toikka loves revisiting former themes and keeps everything that he has created, for future inspiration.

"I never throw anything away. Having stared at an object long enough, it might suddenly develop a use – while another one can sit around waiting for years," says Toikka.

Cooperation with Nuutajärvi's master glassblowers is seamless. Toikka's mere presence in the workshop gets everyone excited. The artist does not produce designs for his creations on paper; he just allows the glass free rein. A good atmosphere in the glass workshop is important to the artist: "I'm not looking for perfection. I want it to be fun."

Muted shades and abundant richness of colour side by side

The range of colours present in Oiva Toikka's Art Works pieces is extensive. The artist loves colour, but in this collection he also introduces clear pieces and different shades of white, for example, in the *Lumilinna* works, whose idea derives from the *Pampula* vases. Along with the *Lollipop* sculptures, they are a manifestation of the abundance of colour and richness of form found in Pop Art at the end of the

1960s. Rather than continuing to play with rich colours, in the Art Works collection objects are presented with a clear or white matt surface. According to the artist, the character of white glass is reflected in the production technique. "It's great to work with white glass, but it is difficult to control. It is more humble than normal glass; it can break suddenly and the shape is lost," Toikka explains.

When asked about his favourite piece in the collections over the years, the Master of Glass replies without hesitation:

"The latest works are the most interesting, because they are not yet complete. As a material, glass wants to contribute. It always has a mind of its own, and it's worth listening to what it says. It has a lot to give."



Lehto